



OUR MISSION

The mission of **Second Harvest Food Bank of Northwest Pennsylvania (SHFB)** is to provide food to those in need within 11 counties of northwest Pennsylvania while creating awareness and educating the community on the realities of hunger.

OUR VISION

A hunger-free community.

OUR PROGRAMS

Child Feeding: For more than 26,000 children in northwest Pennsylvania, school breakfasts and lunches may be the only meals they consistently receive. To ensure these children receive proper nutrition on the weekends, during holiday breaks, and beyond the school year, our Backpack, School Pantry, and Summer Feeding programs provide nutritious, child-friendly foods to children and their families in safe, familiar locations.

Produce Express: Our Produce Express mobile food distribution program delivers food where traditional food pantries are not available, providing fresh, healthy produce and other foods to individuals and families who would not normally have access to it.

Military Share: Military Share, a Produce Express program, provides fresh, nutritious foods for families with at least one member who has served or is currently serving in the armed forces.

PA Senior Food Box Program: The U.S.D.A. provides food items for distribution to seniors with low incomes, to supplement what they can purchase on their own or receive from other food assistance programs.

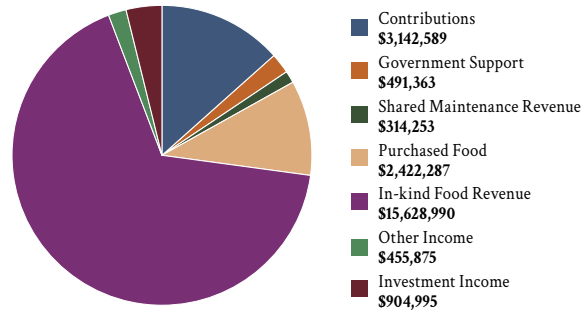
Healthy Pantry Initiative: The PA Healthy Pantry Initiative (HPI) supports our food pantries in becoming a community resource for promoting healthy food choices, nutrition education, and other resources to improve the health of our neighbors in need. Second Harvest is working to encourage healthier eating and nutritional choices through Meals Made Easy, a six-week health education class with our HPI Coordinator at selected food pantries. Meals Made Easy provides hands-on cooking classes, recipes, and nutrition education for our neighbors in need.

Food Rescue & MealConnect: We partner with more than 194 food wholesalers, manufacturers, retail stores, restaurants, and farmers across our 11 counties. Together, we work to recover high quality foods that would otherwise go to waste and which we distribute to our neighbors facing food insecurity. Through our 79 agency partners that participate in the food rescue program, we were able to recover 4,042,343 pounds of food during the 2023–2024 fiscal year. As a partner food bank with Feeding America, we use Feeding America’s MealConnect platform to efficiently coordinate food rescues between our agency partners and donors. MealConnect is a convenient, free, and safe way for businesses of any size to reduce wasted food and donate surplus food and meals throughout our community.

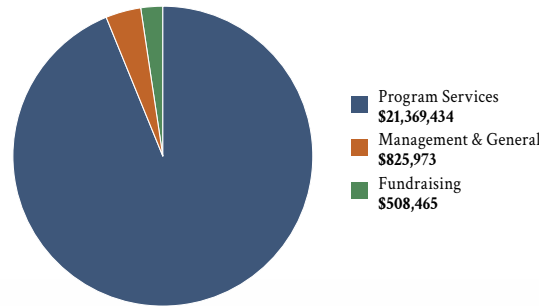
FINANCIALS

FISCAL YEAR 2023–2024 (BEGINNING JULY 1)

SUPPORT & REVENUE



EXPENSES



Increase in Net Assets	Beginning Net Assets	Ending Net Assets
\$656,480	\$12,407,569	\$13,064,049

POUNDS DISTRIBUTED

Emergency Food Pantries/Mobile Distributions: **81%** (10,089,754.99 lbs)
 Senior Programs: **9%** (1,113,141.08 lbs)
 Soup Kitchens/Shelters: **5%** (570,807.43 lbs)
 Child Feeding Programs: **3%** (461,115.64 lbs)
 Other Food Banks: **2%** (235,079.40 lbs)
 Non-Emergency Agency Partners: **<1%** (47,229.15 lbs)
 Total Pounds Distributed: **12,517,127.69 lbs**

FOOD SOURCES

Federal Commodities: **35%** (4,296,752.11 lbs)
 Purchased: **31%** (3,854,505.68 lbs)
 Feeding America: **26%** (3,193,943.24 lbs)
 Local Donations: **7%** (848,400 lbs)
 Food Drives: **1%** (197,250 lbs)
 Total Pounds Received: **12,390,806.03 lbs**
FUNDRAISERS & FOOD DRIVES
 226 Fundraisers and Food Drives
 \$764,739.76 raised
 173,860 pounds of food collected

AT A GLANCE

Pounds Distributed: **12.5 Million**

Meals Distributed: **10.4 Million**

Number of Agency Partners: **384**

Number of Senior Boxes distributed: **33,217**

Number of Backpacks distributed: **96,969**

Number of Backpack programs: **47**

Number of School Pantry programs: **27**

Number of food insecure individuals in NW PA (Map the Meal Gap 2022): **95,350**

Number of food insecure children (Map the Meal Gap 2022): **26,720**

Overall pounds of food rescued: **4,042,343**

Number of food rescue agencies: **79**

Number of food rescue donors: **194**

Number of unique financial donors: **5,613**

Number of gifts: **12,293**

Total dollars donated: **\$3,941,551**



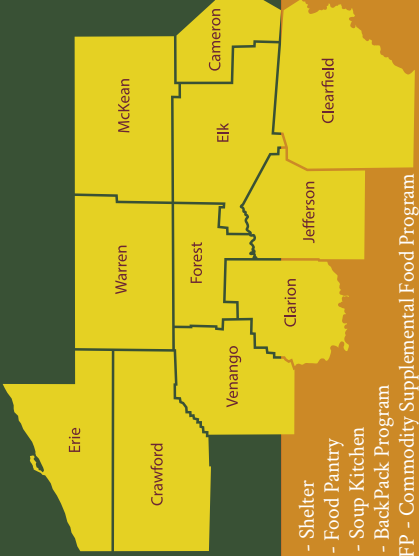


This service can be a blessing for those who need the food. Everyone's budget is stretched due to inflation. Students are excited to be able to take these home to assist their families.

-Diehl Elementary

AGENCY PARTNERS

SH - Shelter
FP - Food Pantry
SK - Soup Kitchen
BP - BackPack Program
CSFP - Commodity Supplemental Food Program



CAMERON COUNTY

BP - SHBP AT WOODLAND ELEMENTARY
CAMERON COUNTY COMMUNITY - FP
CSFP - EMPORIUM ARMS
CSFP - ENDLESS MOUNTAINS METHODIST CHURCH
FOOD FOR THE SOUL - FP

CLARION COUNTY

BP - SHBP AT NORTH CLARION ELEMENTARY
CLARION FIRST UNITED METHODIST CHURCH - FP
CORNERSTONE CHURCH OF GOD - FP
CSFP - ALLGHEHY HILLS RETIREMENT RESIDENCE
CSFP - BROADWOOD TOWERS
CSFP - CHARITABLE DEEDS
CSFP - CHERRY RUN ESTATES
CSFP - CLARION FIRST UNITED METHODIST CHURCH - FP
CSFP - EDENBURG COURT
CSFP - LIBERTY TOWERS
CSFP - REGENCY COMMONS
CSFP - STRATTANVILLE METHODIST CHURCH
CLARION - FP
KEYSTONE SMILES LEARNING CENTER
KNOX - FP
REDBANK VALLEY - FP
SCHOOL PANTRY - NORTH CLARION HIGH SCHOOL
SHARE-A-CARE - FP
STRATTANVILLE UNITED METHODIST CHURCH - FP
ZION JESUS - FP

CLEARFIELD COUNTY

BP - SHBP AT DUBOIS AREA MIDDLE SCHOOL
BP - SHBP AT WASSON ELEMENTARY
CLEARFIELD MINISTERIUM - FP
CSFP - CURWENSVILLE HOUSE APARTMENTS
CSFP - DECATUR VILLAGE
CSFP - DUBOIS AREA - FP
CSFP - GRAY FOUNDATION APARTMENTS
CSFP - HAWK RUN APARTMENTS
CSFP - HOUTZDALE APARTMENTS
CSFP - LIVING BREAD MINISTRIES
CSFP - PARK AVENUE TOWERS
CSFP - SAINT MICHAEL TERRACE
DUBOIS AREA - FP
EMMANUEL CHURCH OF THE NAZARENE - SK
LIVING BREAD MINISTRIES - FP
NEW LIFE CENTER - FP
SALVATION ARMY DUBOIS - FP
SCHOOL PANTRY - DUBOIS AREA HIGH SCHOOL
WEST BRANCH - FP

ERIE COUNTY

ADAGIO HEALTH FP
BENETHY OUTREACH - FP
BLESSED SACRAMENT - FP
BP - SHBP AT ASBURY ELEMENTARY
BP - SHBP AT BELLE VALLEY SCHOOL
BP - SHBP AT COMMUNITY COUNTRY DAY SCHOOL
BP - SHBP AT COUNTRYSIDE ESTATES
BP - SHBP AT DIEHL ELEMENTARY SCHOOL
BP - SHBP AT EDISON ELEMENTARY SCHOOL
BP - SHBP AT FAIRVIEW ELEMENTARY
BP - SHBP AT GRANDVIEW ELEMENTARY
BP - SHBP AT GROVER CLEVELAND
BP - SHBP AT HARDING
BP - SHBP AT IROQUOIS ELEMENTARY
BP - SHBP AT JEFFERSON ELEMENTARY
BP - SHBP AT JOANNA CONNELL ELEMENTARY
BP - SHBP AT LINCOLN ELEMENTARY
BP - SHBP AT MCKINLEY SCHOOL

CRAWFORD COUNTY

ASSOCIATED CHARITIES - FP
CENTER FOR FAMILY SERVICES - FP
CENTERVILLE FELLOWSHIP CHURCH - FP
CONNEAUT VALLEY - FP
CSFP - ASSOCIATED CHARITIES
CSFP - BARTLETT GARDENS
CSFP - BILLIE BROWN BUILDING
CSFP - CENTRAL TOWERS
CSFP - CONNEAUT VALLEY - FP
CSFP - HOLLAND TOWERS
CSFP - LINESVILLE AREA - FP

CSEFP - PALFUND ASSOCIATION

BP - SHBP AT MILL VILLAGE ELEMENTARY
BP - SHBP AT NOKTH EAST ELEMENTARY CENTER
BP - SHBP AT NORTHWESTERN ELEMENTARY
BP - SHBP AT PERRY ELEMENTARY
BP - SHBP AT PEIFFER BURLEIGH
BP - SHBP AT ROBERT BENJAMIN WILEY
BP - SHBP AT ROBISON ELEMENTARY
BP - SHBP AT SARAH REED
BP - SHBP AT SPRINGFIELD ELEMENTARY
BP - SHBP AT TRACY ELEMENTARY
BP - SHBP AT UNION CITY ELEMENTARY
BP - SHBP AT WATERFORD ELEMENTARY
CATHEDRAL OF ST PAUL - FP
CENTER CITY APARTMENTS (HANDS) - FP
CHRISTIAN CUPBOARD - FP
CHURCH OF THE NATIVITY - FP
CITY MISSION SHELTER - SK
CLIMATE CHANGERS - FP
COMMUNITY OF CARING - FP
COMMUNITY OF CARING - SH
COMMUNITY SHELTER SERVICE
CORNERSTONE ERIE LIBERTY COMMUNITY CHURCH - FP
CORRY AREA - FP
CSFP - 4 NINE
CSFP - BARNETT BUILDING
CSFP - BATTLES VILLAGE APARTMENTS
CSFP - BETHANY OUTREACH CENTER
CSFP - CATHEDRAL OF ST. PAUL
CSFP - CHRISTIAN CUPBOARD - FP
CSFP - COLLEGE VIEW MANOR APARTMENTS
CSFP - CORRY AREA - FP
CSFP - CURRY-SCHELL APARTMENTS
CSFP - DOOR DASH
CSFP - EASTMINSTER CHURCH
CSFP - EDINBORO - FP
CSFP - ELK VALLEY MANOR
CSFP - ELLA COCHRAN - FP
CSFP - ELMWOOD AVENUE
PRESBYTERIAN CHURCH - FP
CSFP - FRIENDSHIP APARTMENTS
CSFP - GLENWOOD METHODIST CHURCH
CSFP - GRANDVIEW MANOR
CSFP - HIGHLAND VILLAGE APARTMENTS
CSFP - HIGHPOINT TOWERS
CSFP - HOME HOUSE OF ERIE - FP
CSFP - JOHN F. KENNEDY CENTER
CSFP - JOHN HORAN GARDEN APARTMENTS
CSFP - LIFE NWPA
CSFP - MANLY HEIGHTS
CSFP - MARTIN LUTHER KING CENTER
CSFP - METHODIST TOWERS
CSFP - NORTHWESTERN - FP
CSFP - OSTROW APARTMENTS
CSFP - PLEASANT MANOR APARTMENTS
CSFP - RICHFORD ARMS
CSFP - SAINT ANDREW - FP
CSFP - SAINT JOSEPH APARTMENTS
CSFP - SAINT MARTIN CENTER
CSFP - SALSBUARY APARTMENTS

ELK COUNTY

BP - SHBP AT FOX TOWNSHIP ELEMENTARY
BP - SHBP AT ST MARYS ELEMENTARY
CHRISTIAN FOOD BANK - FP
CSFP - DAN DICKINSON APARTMENTS
CSFP - DUFFY APARTMENTS
CSFP - ELK TOWERS
CSFP - SAINT JOSEPH'S TERRACE
CSFP - SALVATION ARMY: RIDGWAY HELPING HAND - FP
KEYSTONE RURAL HEALTH FOOD CONSORTIA - FP
RIDGWAY - FP
SALVATION ARMY RIDGWAY - FP
SCHOOL PANTRY - JOHNSONBURG AREA HIGH SCHOOL
SCHOOL PANTRY - RIDGWAY
SCHOOL PANTRY - ST MARYS AREA HIGH SCHOOL

ERIE COUNTY

ADAGIO HEALTH FP
BENETHY OUTREACH - FP
BLESSED SACRAMENT - FP
BP - SHBP AT ASBURY ELEMENTARY
BP - SHBP AT BELLE VALLEY SCHOOL
BP - SHBP AT COMMUNITY COUNTRY DAY SCHOOL
BP - SHBP AT COUNTRYSIDE ESTATES
BP - SHBP AT DIEHL ELEMENTARY SCHOOL
BP - SHBP AT EDISON ELEMENTARY SCHOOL
BP - SHBP AT FAIRVIEW ELEMENTARY
BP - SHBP AT GRANDVIEW ELEMENTARY
BP - SHBP AT GROVER CLEVELAND
BP - SHBP AT HARDING
BP - SHBP AT IROQUOIS ELEMENTARY
BP - SHBP AT JEFFERSON ELEMENTARY
BP - SHBP AT JOANNA CONNELL ELEMENTARY
BP - SHBP AT LINCOLN ELEMENTARY
BP - SHBP AT MCKINLEY SCHOOL

CSFP - SALVATION ARMY: ERIE

CSFP - SCHMID TOWERS
CSFP - SHFB
CSFP - SISTER MARY PASCAL CHURCH
CSFP - THE FEDERATED CHURCH
CSFP - TULLIO TOWERS
CSFP - UNION CITY FULL GOSPEL CHURCH
CSFP - UNION CITY SENIOR CENTER
CSFP - VILLA APARTMENTS
CSFP - WATERFORD AREA - FP
CSFP - WESLEYVILLE INTERFAITH - FP
CSFP - WEST MILLCREEK - FP
EARLY CONNECTIONS - FP
EDINBORO EMERGENCY - FP
EDMUND L THOMAS
ELLA COCHRAN - FP
ELMWOOD AVENUE
PRESBYTERIAN CHURCH - FP
EMMAUS MINISTRIES - SK
EMMAUS MINISTRIES KIDS CAFE
FAIRVIEW PRESBYTERIAN - FP
FEDERATED CHURCH - FP
FIRST ALLIANCE CHURCH - FP
GAUDENZIA COMMUNITY HOUSE - SH
GLENWOOD METHODIST CHURCH
HARBORCREEK YOUTH SERVICES
HEAVENLY PENTECOSTAL MISSION - FP
HOLY TRINITY LUTHERAN - FP
HOLY TRINITY LUTHERAN - SK
HOME HOUSE OF ERIE - FP
ISLAMIC ASSOCIATION OF ERIE - FP
JOHN F KENNEDY KIDS CAFE
KEARSARGE AREA - FP
LOWVILLE - FP
MARTIN LUTHER KING CENTER - FP
MEALS ON WHEELS, BLIZZARD BAGS
MENTAL HEALTH ASSOCIATION - FP
MERCY ANCHOR COMMUNITY CENTER - FP
MERCY CENTER FOR WOMEN - SH
MERCYHURST CHILD LEARNING - CHILDCARE
MHEDS - FP
MILITARY SHARE - ERIE
NEIGHBORHOOD WATCH #13
SNOOPS - FP
NORTHWESTERN - FP
OUR LADY OF MT CARMEL / ST LUKES - FP
PERSEUS HOUSE - ANDROMEDA RTF
PERSEUS HOUSE - BOYS ENHANCED RTF
PERSEUS HOUSE - BRIGHTER HORIZONS
PERSEUS HOUSE - SHELTER
RCCG-REDEEMED CHRISTIAN CHURCH OF GOD - FP
SACRED HEART - FP
SAFE JOURNEY - SH
SAFENET - SH
SALVATION ARMY CORRY - FP
SALVATION ARMY CORRY - SK
SALVATION ARMY SOCIAL SERVICES
SCHOOL PANTRY - CLARK ELEMENTARY
SCHOOL PANTRY - ELK VALLEY
SCHOOL PANTRY - CORRY AREA HIGH SCHOOL
SCHOOL PANTRY - EAST MIDDLE SCHOOL
SCHOOL PANTRY - ERIE HIGH SCHOOL
SCHOOL PANTRY - FAIRVIEW HIGH SCHOOL
SCHOOL PANTRY - FAIRVIEW MIDDLE SCHOOL
SCHOOL PANTRY - GIRARD HIGH SCHOOL
SCHOOL PANTRY - HOME HOUSE OF ERIE
SCHOOL PANTRY - IROQUOIS HIGH SCHOOL
SCHOOL PANTRY - NORTH EAST HIGH SCHOOL
SCHOOL PANTRY - NORTH EAST MIDDLE SCHOOL
SCHOOL PANTRY - WILSON MIDDLE SCHOOL
SCHOOL PANTRY - STRONG VINCENT MIDDLE SCHOOL
SCHOOL PANTRY - WILSON MIDDLE SCHOOL
SERENITY RESOURCE & RECOVERY - FP
SHFB - DOOR DASH
SHFB - ORDER AHEAD
SHFB MOBILE - ZEM ZEM

MOUNT JEWETT HUNGER PROJECT - FP
PORT ALLEGANY - FP
SALVATION ARMY BRADFORD - FP
SMETHPORT - CHRISTIAN COMMUNITY SERVICES - FP
ST ELIZABETH OF HUNGARY - FP
YWCA BRADFORD - FP

VENANGO COUNTY

ADAGIO HEALTH - FP
BP - SHBP AT CENTRAL ELEMENTARY SCHOOL
BP - SHBP AT HASSON HEIGHTS
BP - SHBP AT SANDY CREEK ELEMENTARY
BP - SHBP AT VICTORY ELEMENTARY
CHAPEL ON THE HILL - FP
COMMUNITY PANTRY PROJECT - FP
CRANBERRY AREA - FP
CSFP - CHRIST EPISCOPAL CHURCH
CSFP - CLINTONVILLE APARTMENTS
CSFP - COMMUNITY SERVICES OF VENANGO
CSFP - CRANBERRY AREA - FP
CSFP - DOOR DASH CHRIST UNITED METHODIST CHURCH
CSFP - FRANKLIN TOWERS
CSFP - LUTHER PLACE APARTMENTS
CSFP - MORAN TOWERS
CSFP - OAK HILL APARTMENTS
CSFP - SAINT PATRICK CHURCH - FP
EMMAUS HAVEN - SH
MILITARY SHARE - FRANKLIN OIL CITY COMMUNITY SERVICES OF VENANGO - FP
PLEASANTVILLE METHODIST CHURCH - FP
ROCKY GROVE COMMUNITY SERVICES OF VENANGO - FP
SALVATION ARMY VENANGO COUNTY - SK
SCHOOL PANTRY - CRANBERRY JR / SR HIGH SCHOOL
SCHOOL PANTRY - OIL CITY MIDDLE SCHOOL
ST ELIZABETH CENTER - FP
ST JOHN EPISCOPAL CHURCH - FP
ST PATRICK CHURCH - FP
THE CROSSING FREE METHODIST CHURCH - FP

FOREST COUNTY

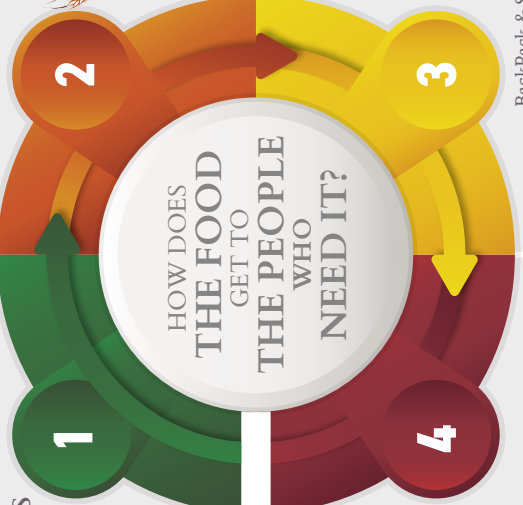
BP - SHBP AT EAST FOREST ELEMENTARY
BP - SHBP AT WEST FOREST ELEMENTARY
CSFP - NORTH CLARION / MARIENVILLE - FP
CSFP - WESTERN FOREST COUNTY - FP
NORTH CLARION / MARIENVILLE - FP
WESTERN FOREST COUNTY - FP

JEFFERSON COUNTY

BP - SHBP AT HICKORY GROVE
BP - SHBP AT PINECREEK ELEMENTARY
BROOKVILLE AREA - FP
CROSS TOWN PUNXSU - FP
CSFP - BROOKVILLE AREA - FP
CSFP - CASCADE VILLAGE
CSFP - JEFFERSON STREET HIGHRISE
CSFP - MAHONING TOWERS
CSFP - NORTH FORK HEIGHTS
CSFP - SALVATION ARMY: PUNXSUTAWNEY
CSFP - SUNRISE TERRACE
CSFP - SYCAMORE APARTMENTS
CSFP - THE FOUNDRY
CSFP - TOBY TERRACE
FALLS CREEK HELPING HANDS - FP
MILITARY SHARE - JEFFERSON
REYNOLDSVILLE AID HELPING HANDS - FP
REYNOLDSVILLE AREA - FP

MCKEAN COUNTY

BP - SHBP AT KANE ELEMENTARY
CHURCH OF THE ASCENSION - FP
CSFP - CENTRAL TOWERS. MCKEAN
CSFP - DESTINATIONS BRADFORD
CSFP - GATHERED FROM THE GROVE - FP
CSFP - KANE AREA COMMUNITY CENTER - FP
CSFP - MOUNT JEWETT HILLTOP HERITAGE COALITION
CSFP - SALVATION ARMY: BRADFORD
DESTINATIONS BRADFORD - FP
DUKE CENTER UNITED METHODIST CHURCH - FP
FRIENDSHIP TABLE INC. - SK
GATHERED FROM THE GROVE - FP
KANE AREA - FP
KANE AREA COMMUNITY CENTER - FP



BackPack & School Pantry Programs